

L x W x H
43.60 m x 19.78 m x 8 m
143.04 ft x 64.89 ft x 26.24 ft
Built area = 862.40 sqm (9282.79 sqft)

Ventilation system, heating system, concrete floor, soundproof, fire alarm, fire hydrants
cyclorama, power supply 200 KW
large stage doors x2
catwalks – YES

STAGE 7

BACKGROUND
+4.92

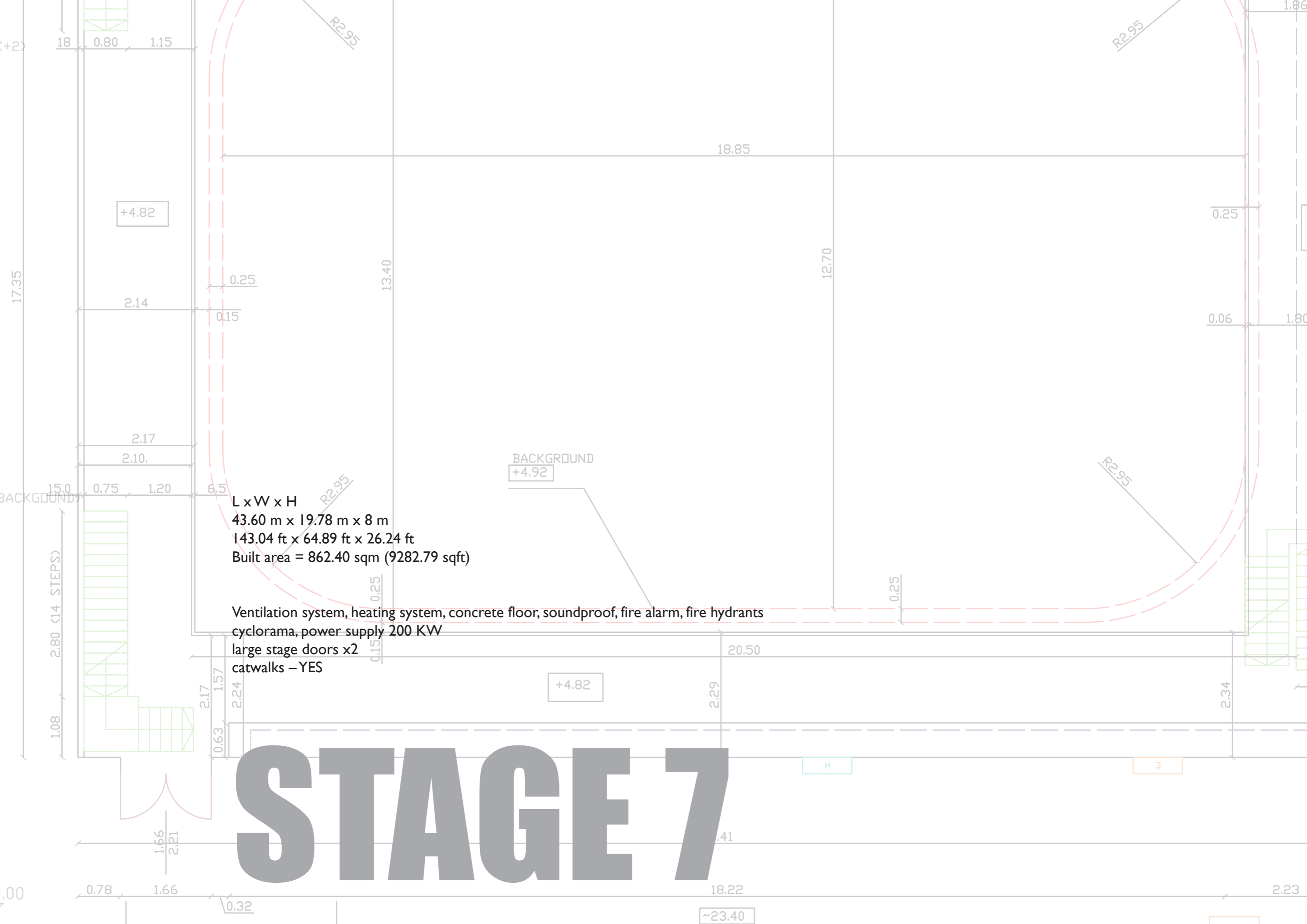
+4.82

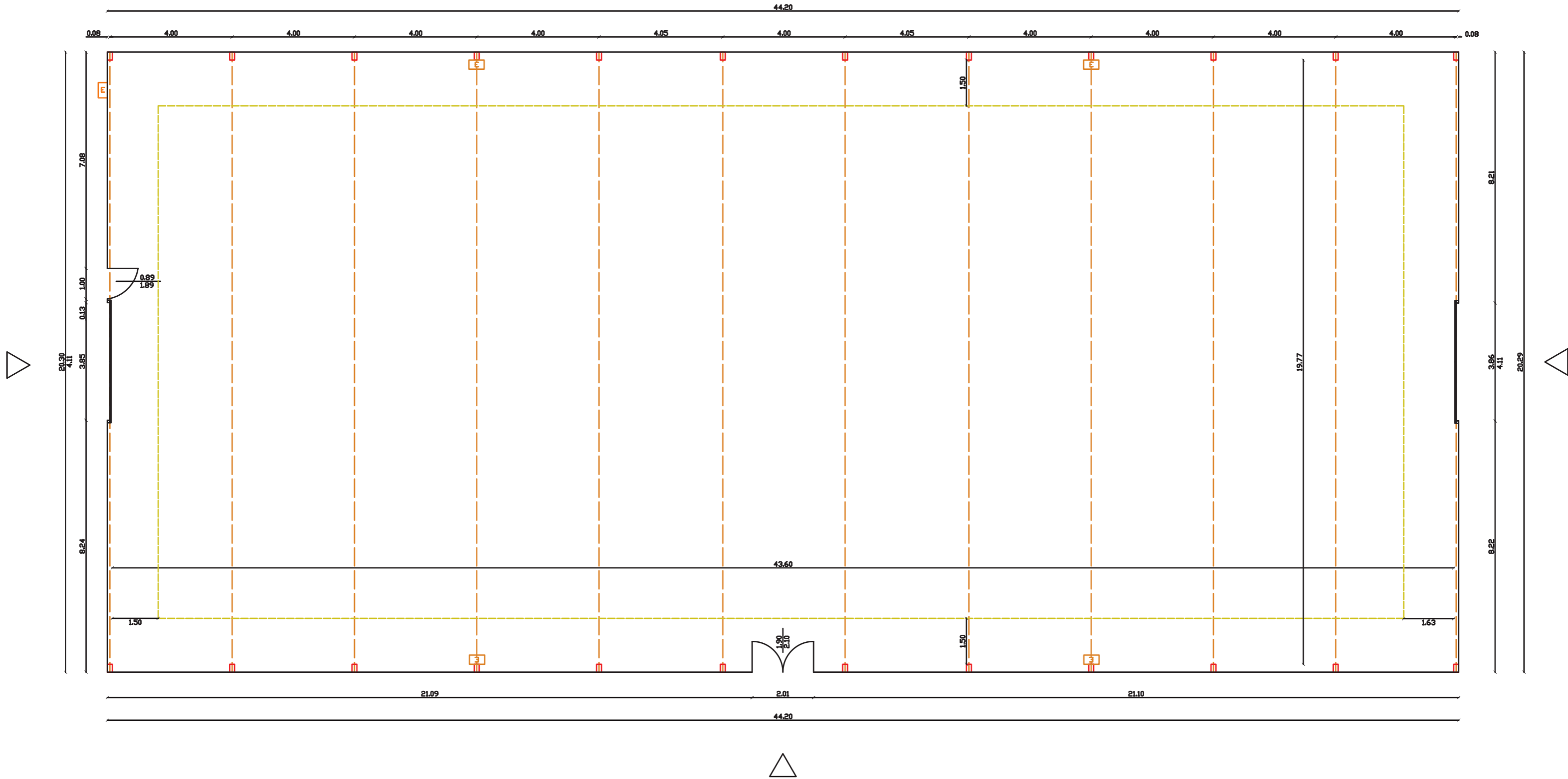
+4.82

~23.40

H

E

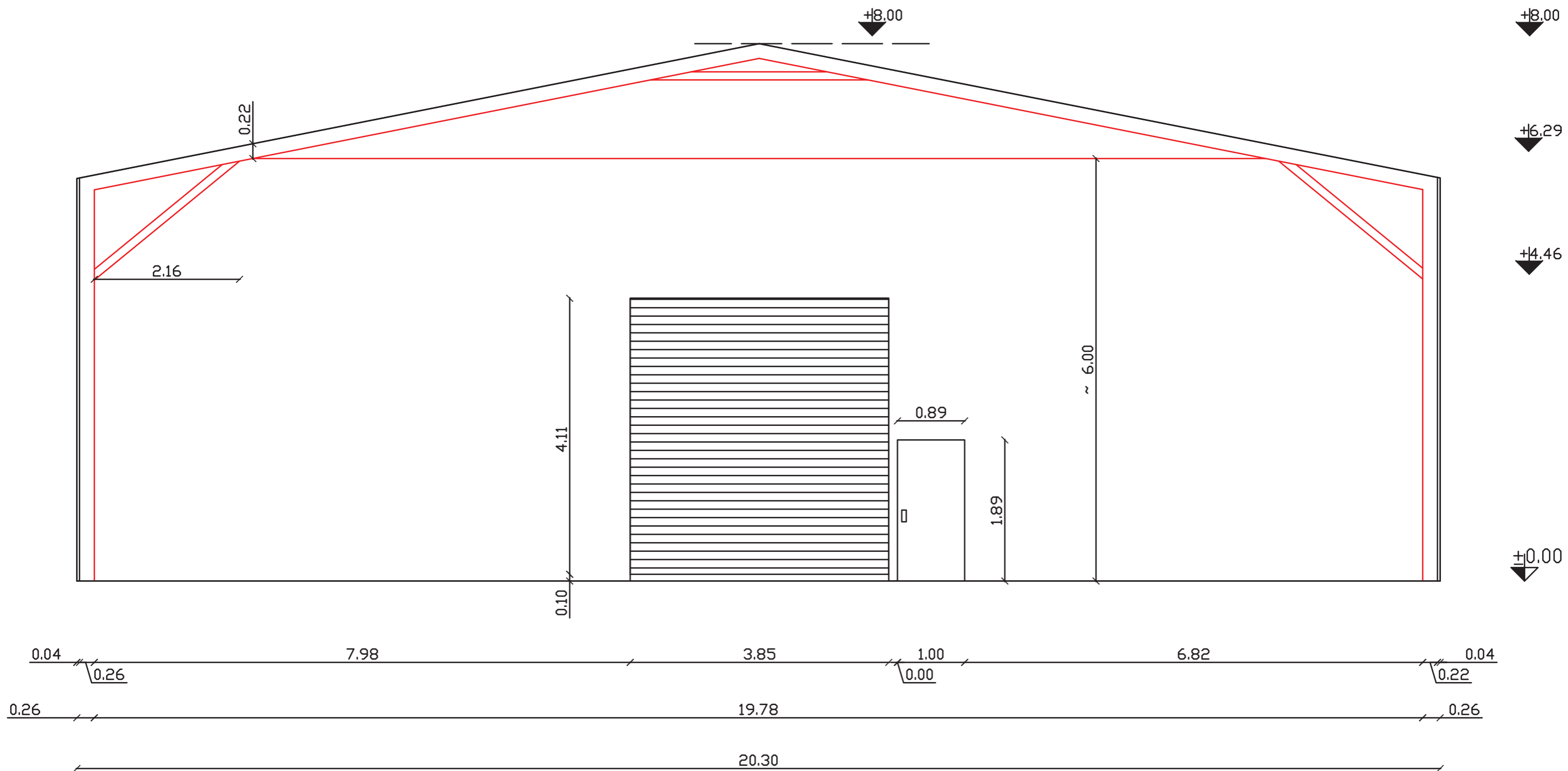




STAGE 7 PLAN SECTION
 LENGTH = 43.60 M
 WIDTH = 19.78 M
 HEIGHT = 8.00 M
 AREA = 862.40 SQM



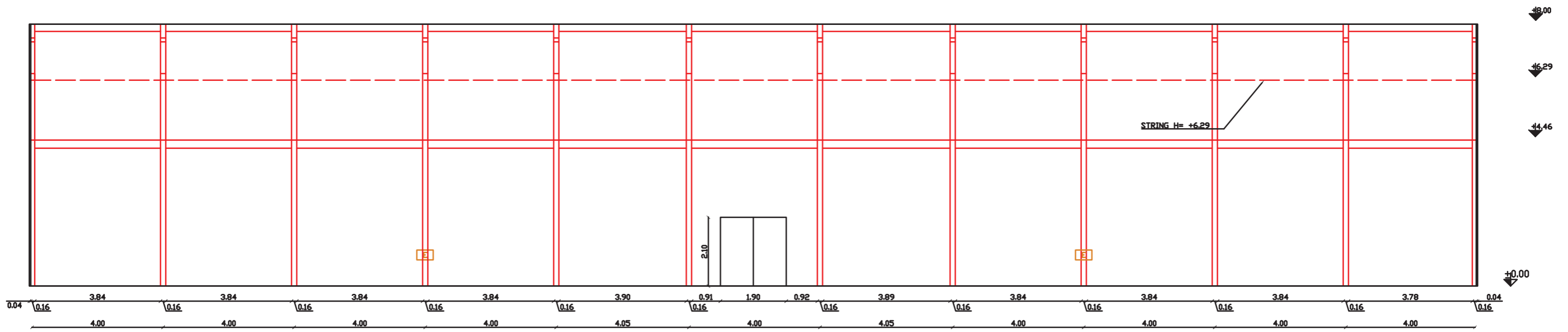
STAGE 7 PLAN



STAGE 7 PLAN SECTION
 LENGTH = 43.60 M
 WIDTH = 19.78 M
 HEIGHT = 8.00 M
 AREA = 862.40 SQM



STAGE 7 CROSS



STAGE 7 PLAN SECTION
 LENGTH = 43.60 M
 WIDTH = 19.78 M
 HEIGHT = 8.00 M
 AREA = 862.40 SQM



STAGE 7 LONGITUDINAL