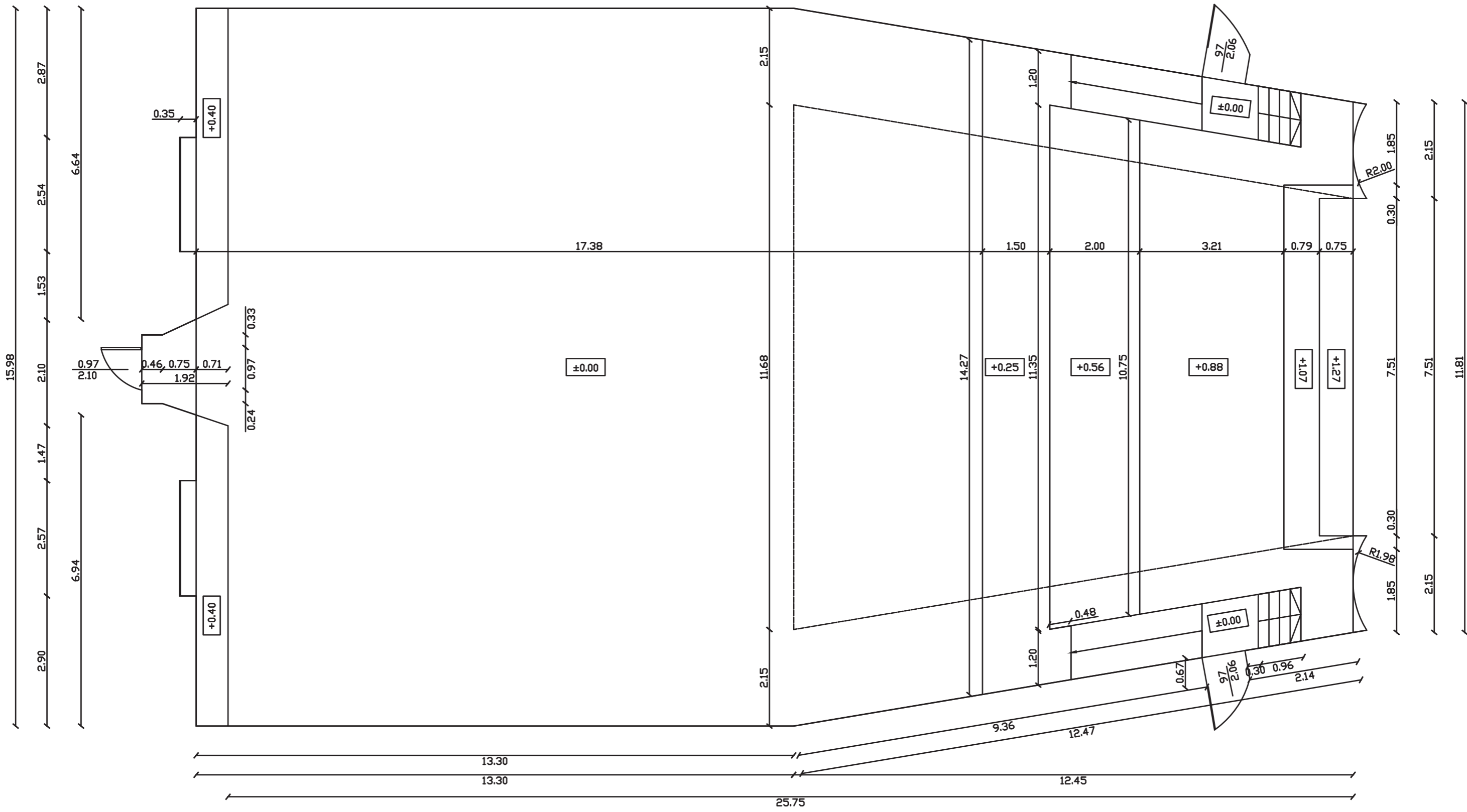


L x W x H
 25.75 m x 15.98 m x 9.46 m
 84.48 ft x 52.42 ft x 31.03 ft
 Total area = 815 sqm (8,772 sqft)

Air conditioning, heating system, cyclorama, soundproof, fire protection;
 max power load 80 KW
 ice box doors x 2

STAGE 6

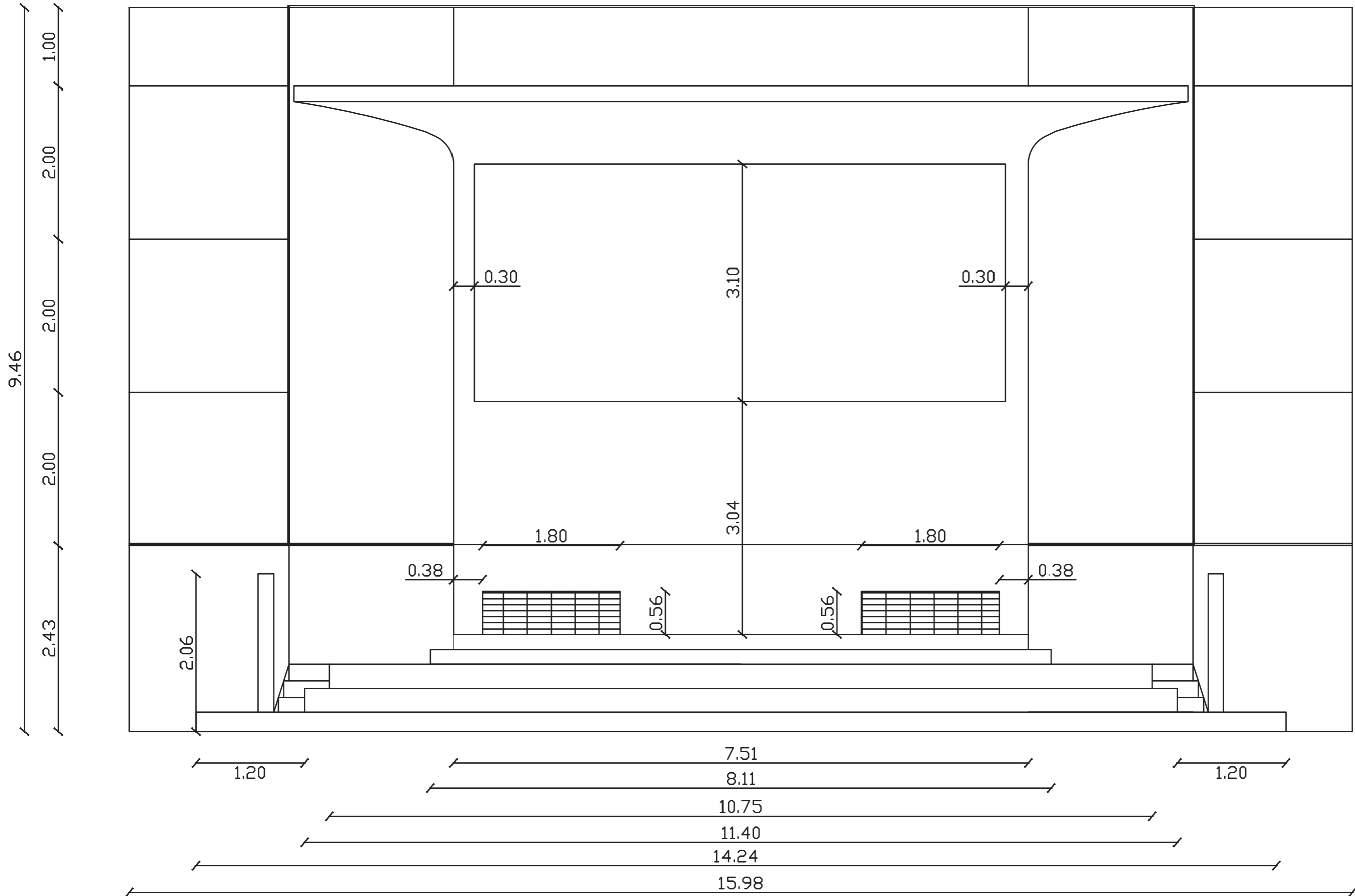
7.51

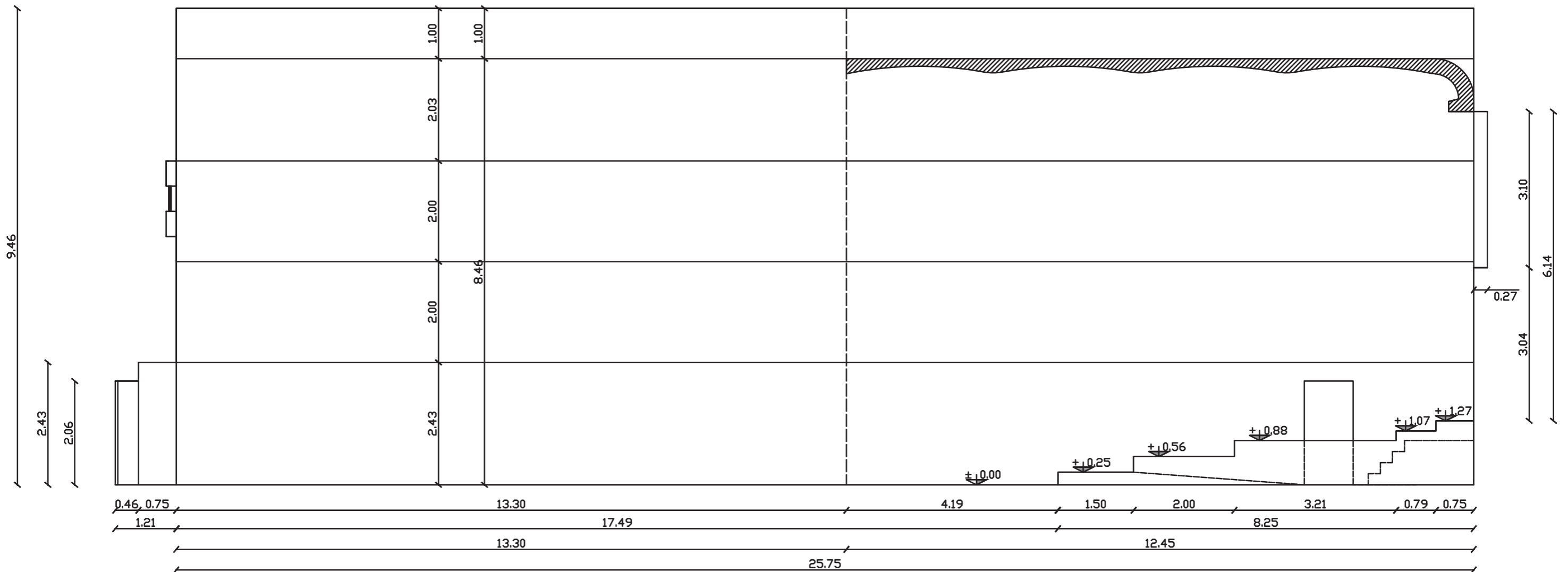


STAGE 6
 PLAN SECTION
 AREA = 385.527 SQM
 HEIGHT = 9.46 M



STAGE 6 PLAN





STAGE 6
 LONGITUDINAL SECTION
 AREA = 385.527 SQM
 HEIGHT = 9.46 M

