

L x W x H
 60.50 m x 27.50 m x 7.52 m
 198 ft x 90 ft x 24.67 ft
 Total area = 1,664 sqm (17,911 sqft)
 Water Tank:
 Area = 747 sqm (8,040 sqft)
 Volume = 3750m³ (132,430 ft³)
 Min Depth = 1.5m (5 ft)
 Max Depth = 5.5m (18 ft)

Ventilation system, heating system, concrete floor, fire alarm, fire hydrants,
 power supply 400 KW (if no simultaneous shoot in stages 8A+8B+15)
 elephant doors x 1
 ice box doors x 3
 chains/tackle beams/ trolleys - YES
 catwalks - YES

STAGE 9

35+0.10

3.19+0.10

19.75

0.32 4.72 0.45 4.48 0.45 4.49 0.45 4.72 0.35

0.35 0.35 0.74 0.74

POOL

BASEMENT

GANGWAY

AIR - CONDITIONING

RADIATOR

RADIATOR

+2.62

1.32

1.80

0.77

1.82

1.00

3.03

0.12

1.40

1.00

0.50

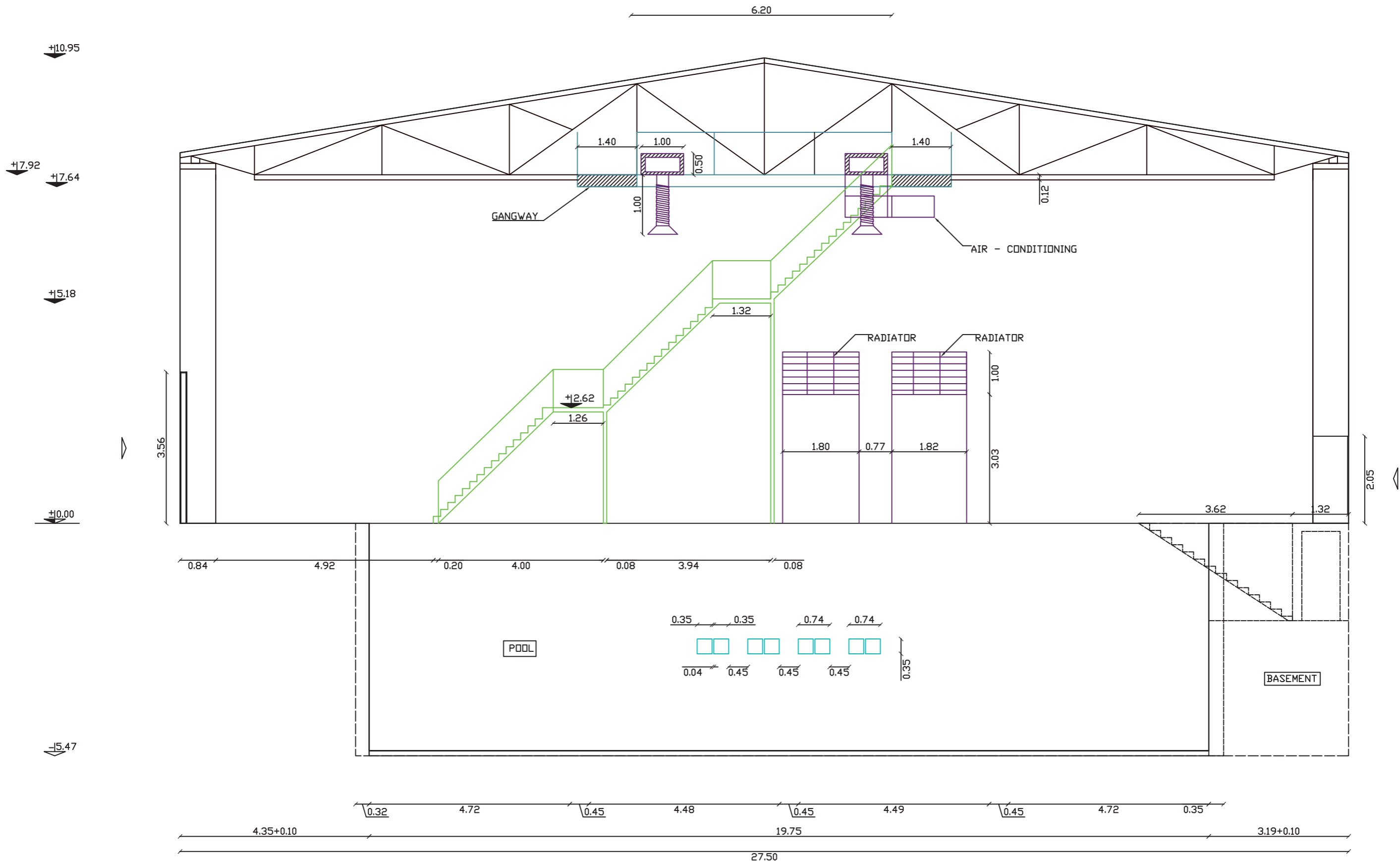
1.00

1.40

3.62

1.32

2.05

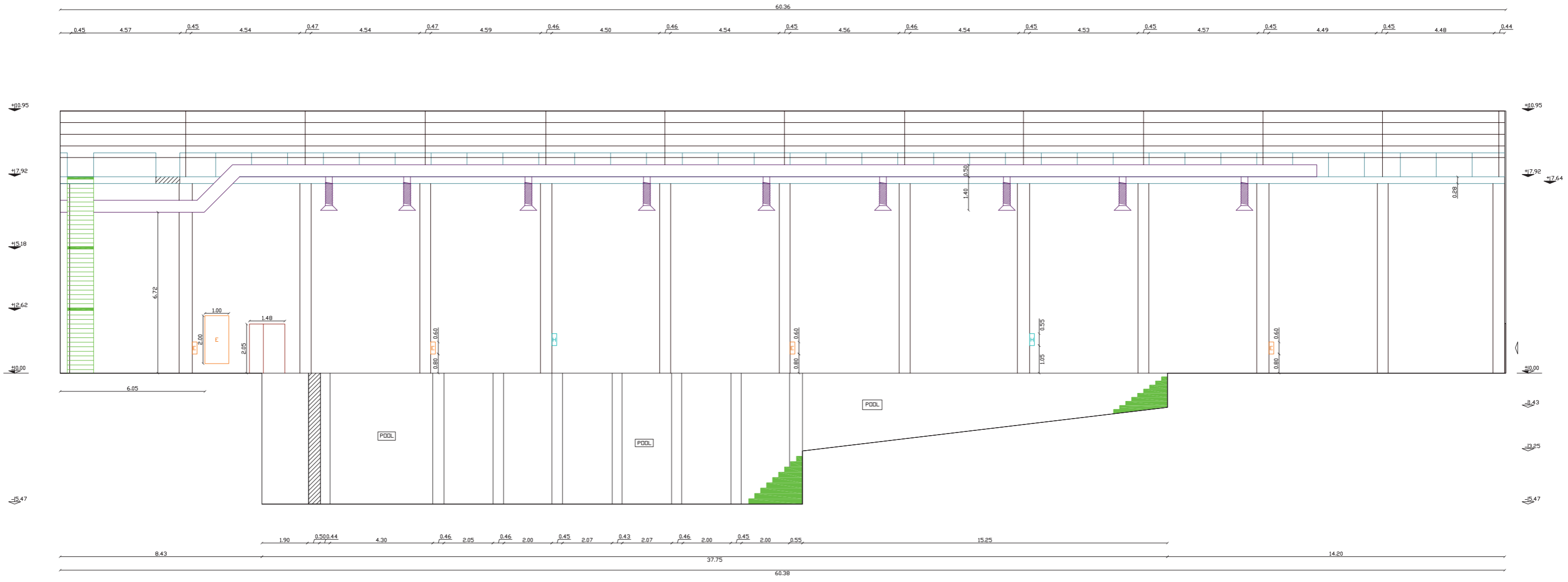


STAGE 9 CROSS SECTION

STAGE AREA
 $60.50 \times 27.50 = 1663.37$ SQM
 H STAGE = 10.95 M
 POOL AREA
 $S = 19.80 \times 37.72 = 746.95$ SQM



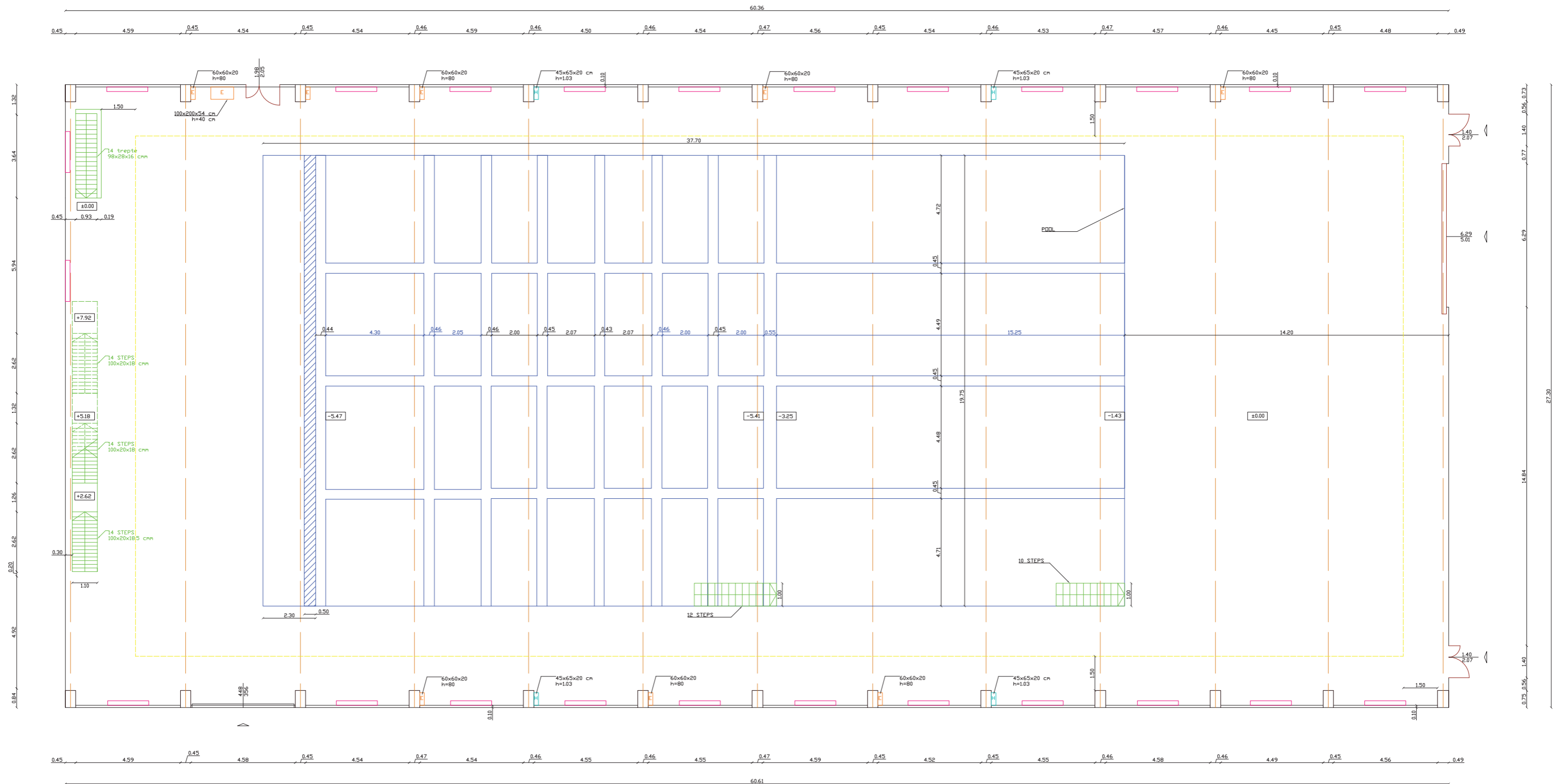
STAGE 9 CROSS



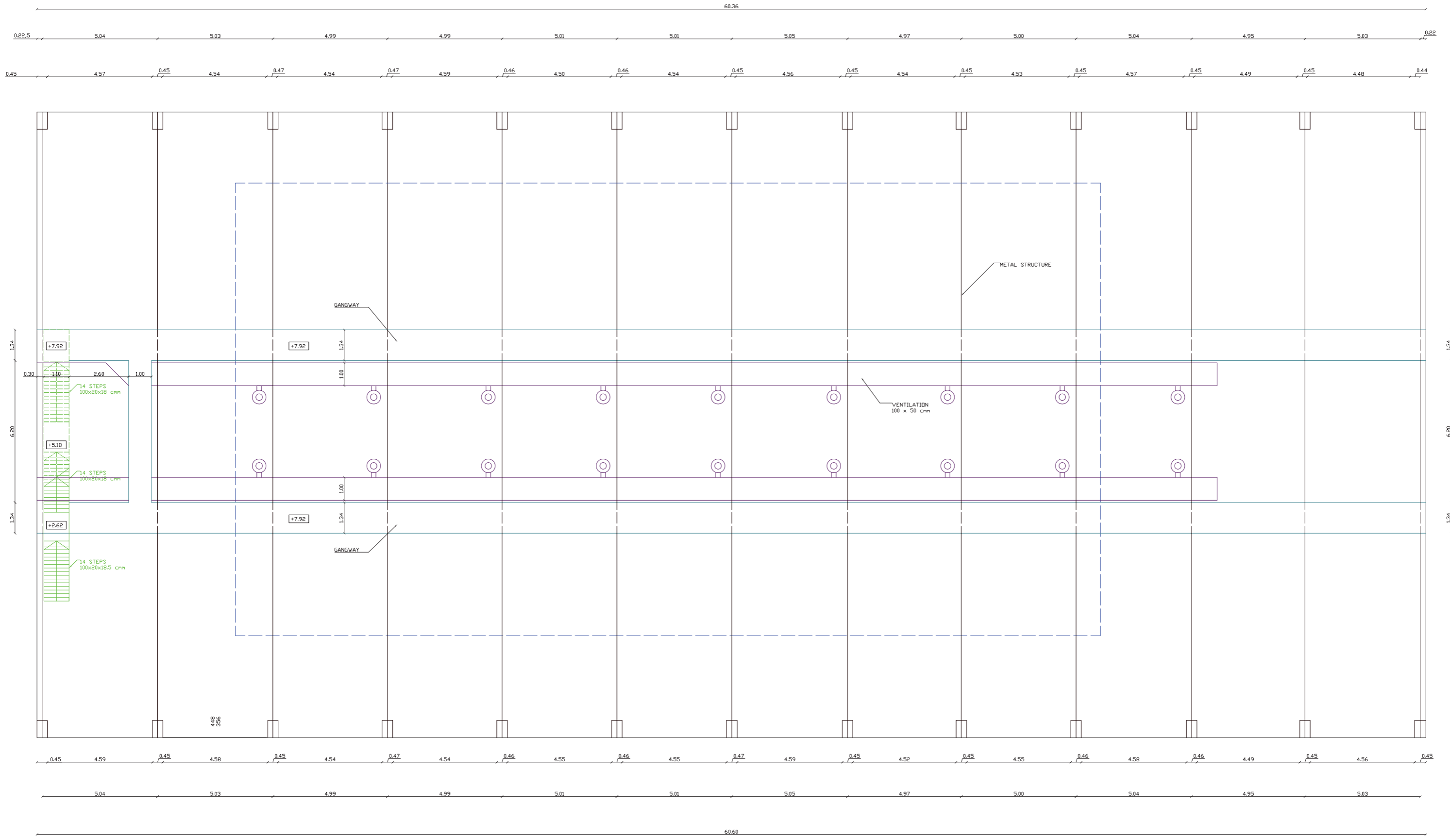
STAGE 9 LONGITUDINAL SECTION

STAGE AREA
 $60.50 \times 27.50 = 1663.37$ SQM
 H STAGE = 10.95 M
 POOL AREA
 $S = 19.80 \times 37.72 = 746.95$ SQM





STAGE 9 PLAN SECTION
 POOL AREA
 $S=19.80 \times 37.72=746.95$ SQM
 STAGE AREA
 $60.50 \times 27.50=1663.37$ SQM
 H STAGE = 10.95 M



STAGE 9 PLAN

STAGE 9. PLAN SECTION
 +7.92 m
 POOL AREA
 $S=19.80 \times 37.72=746.95$ SQM
 STAGE AREA
 $60.50 \times 27.50=1663.37$ SQM
 H STAGE = 10.95 M