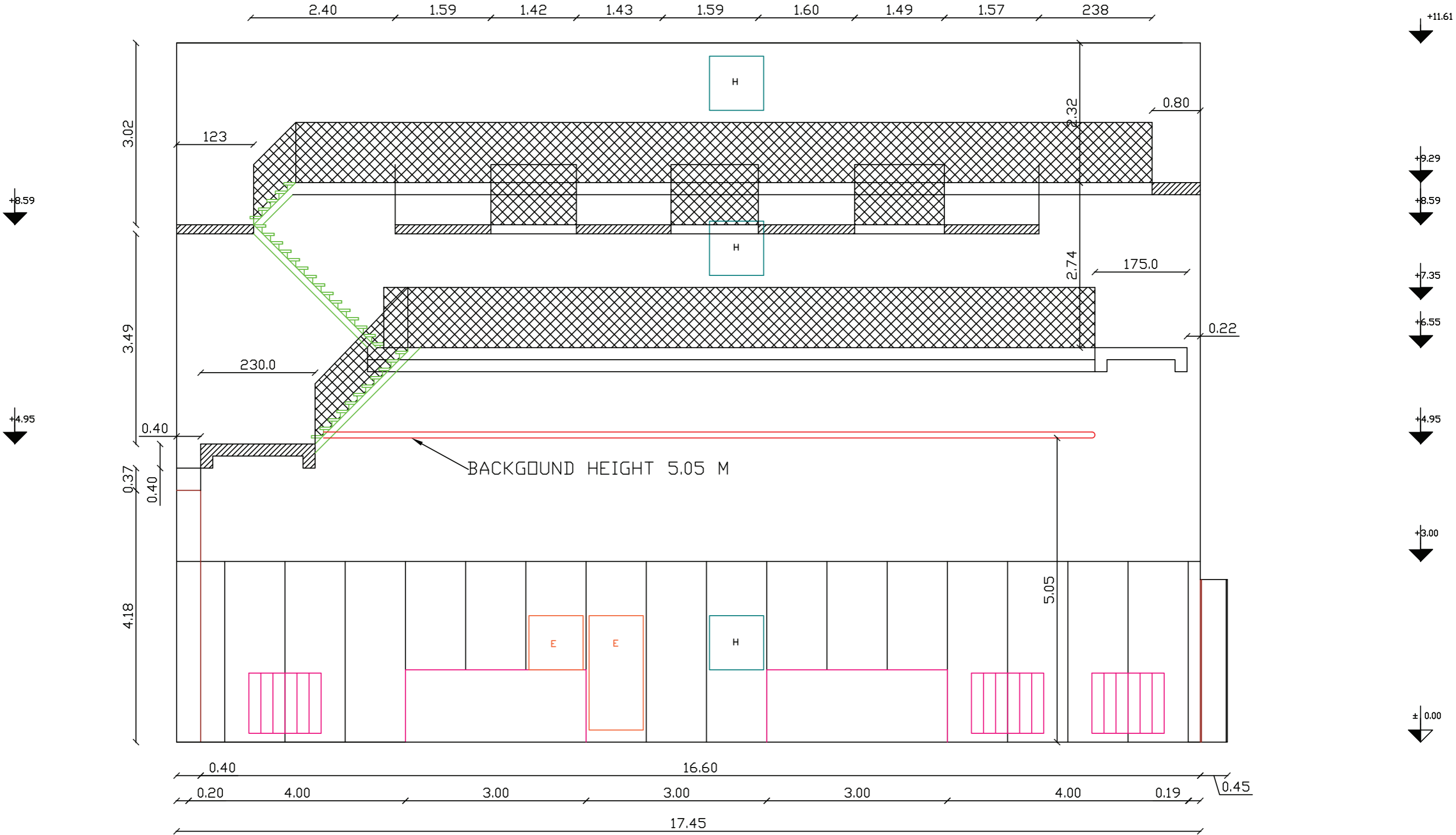


L x W x H
 23.40 m x 17.45 m x 8.59 m
 76.77 ft x 57.25 ft x 28.18 ft
 Built area = 408.33 sqm (4 395.22 sqft)

Ventilation system, heating system, wooden floor, fire alarm, fire hydrants
 power supply 300 KW (if no simultaneous shoot in stages 1+2+4)
 elephant doors x 1
 ice box doors x 2
 chains/tackle beams/trolleys - YES
 catwalks - YES.

STAGE 3



STAGE 3. CROSS SECTION

LENGHT = 23.40 M

WIDTH = 17.45 M

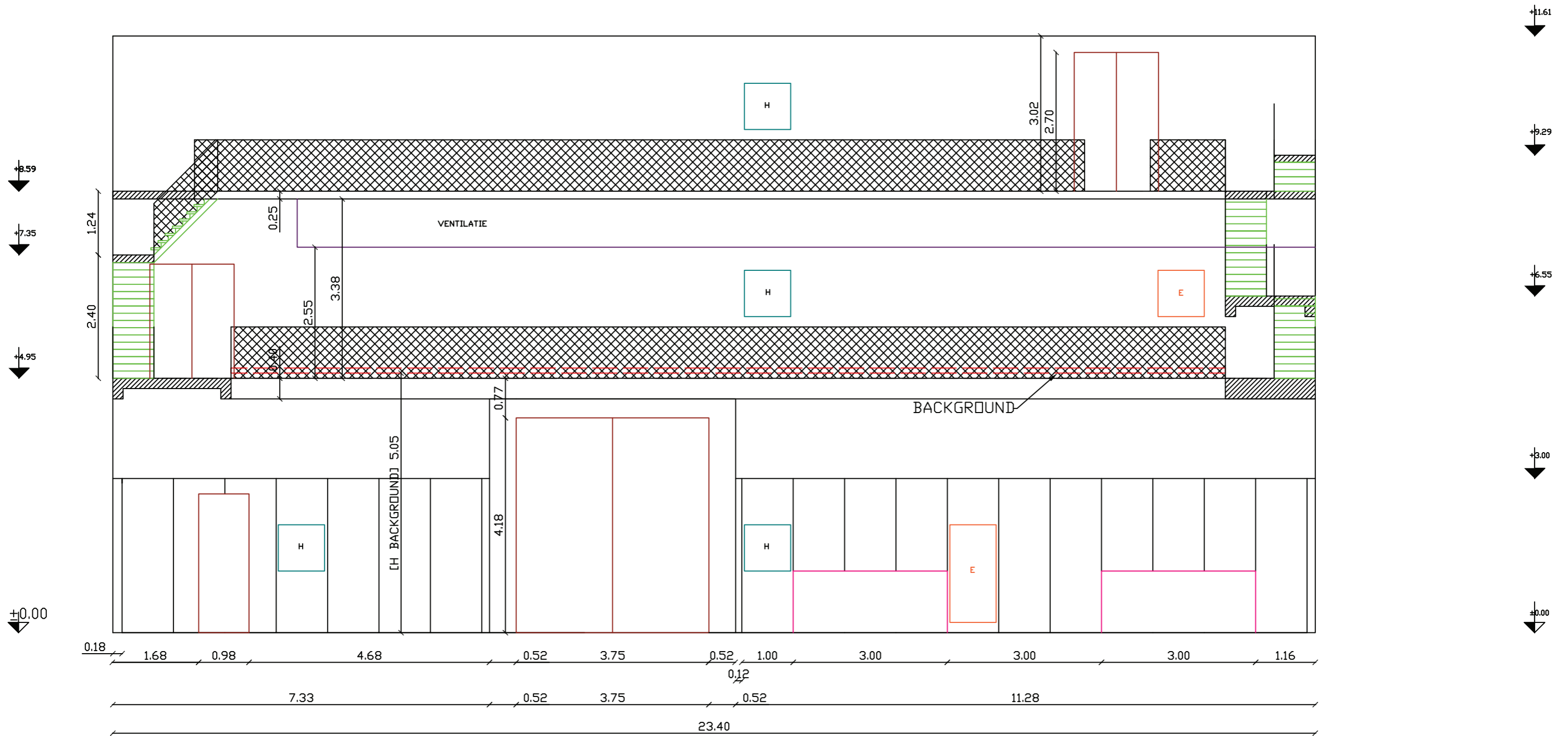
HEIGHT = 11.61 M

AREA = 408.33 SQM

OPERABLE AREA = 259.29 SQM

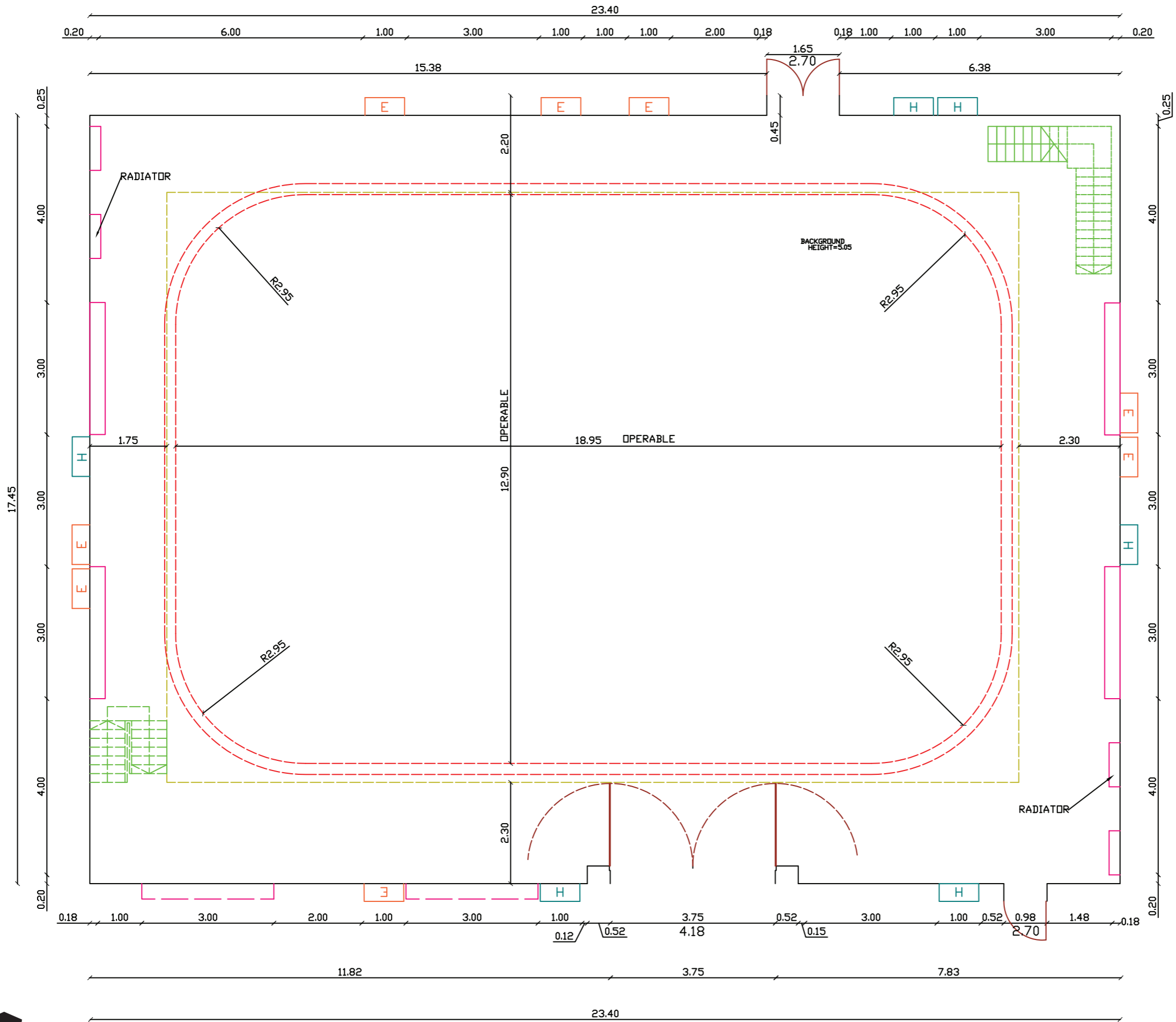


STAGE 3 CROSS



STAGE 3.
LONGITUDINAL SECTION

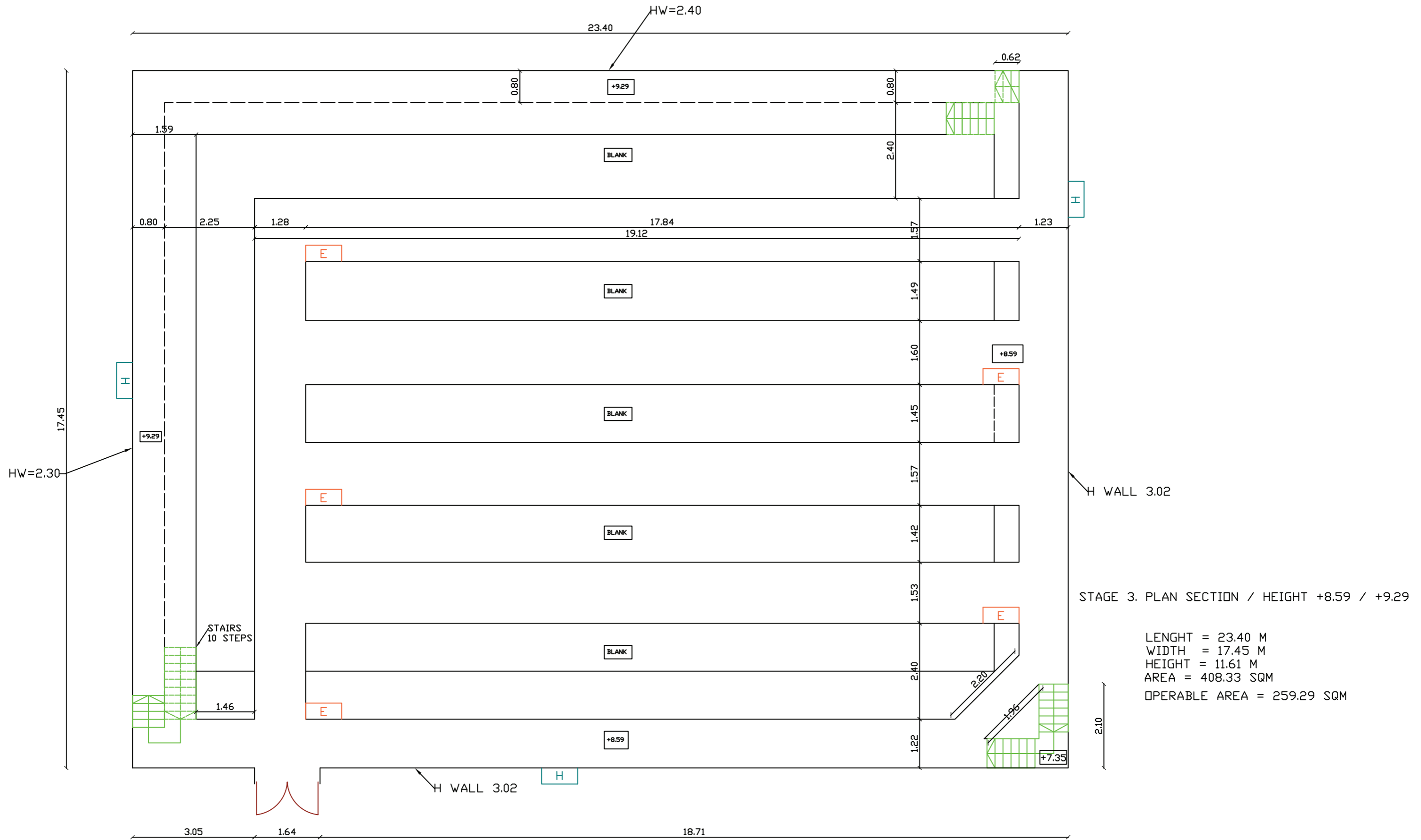
LENGHT = 23.40 M
 WIDTH = 17.45 M
 HEIGHT = 11.61 M
 AREA = 408.33 SQM
 OPERABLE AREA = 259.29 SQM

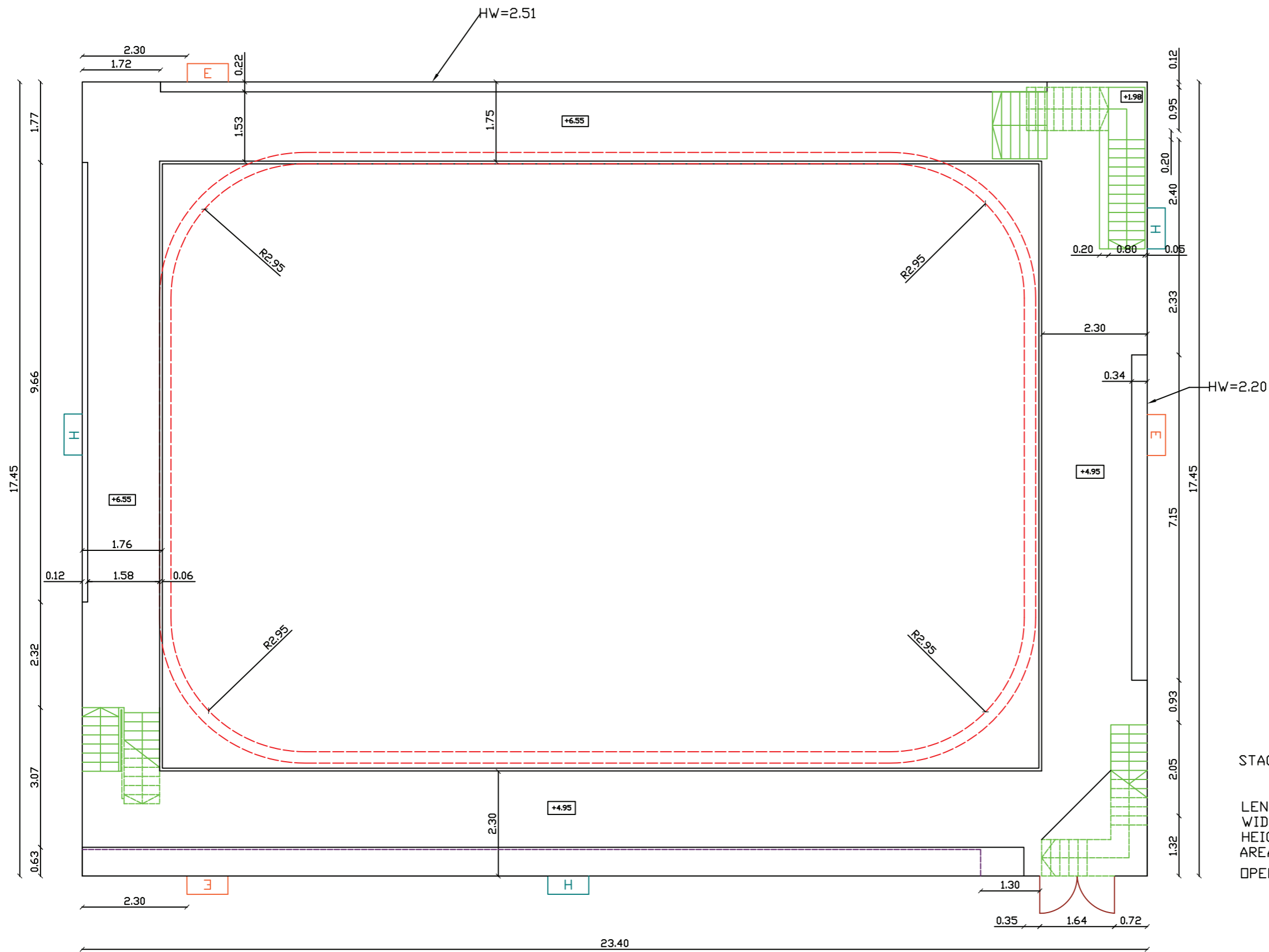


STAGE 3. PLAN SECTION +/-0.00
 LENGTH = 23.40 M
 WIDTH = 17.45 M
 HEIGHT = 11.61 M
 AREA = 408.33 SQM
 OPERABLE AREA = 259.29 SQM



STAGE 3 PLAN





STAGE 3. PLAN SECTION / HEIGHT +4.95 / +6.55

LENGTH = 23.40 M
 WIDTH = 17.45 M
 HEIGHT = 11.61 M
 AREA = 408.33 SQM
 OPERABLE AREA = 259.29 SQM