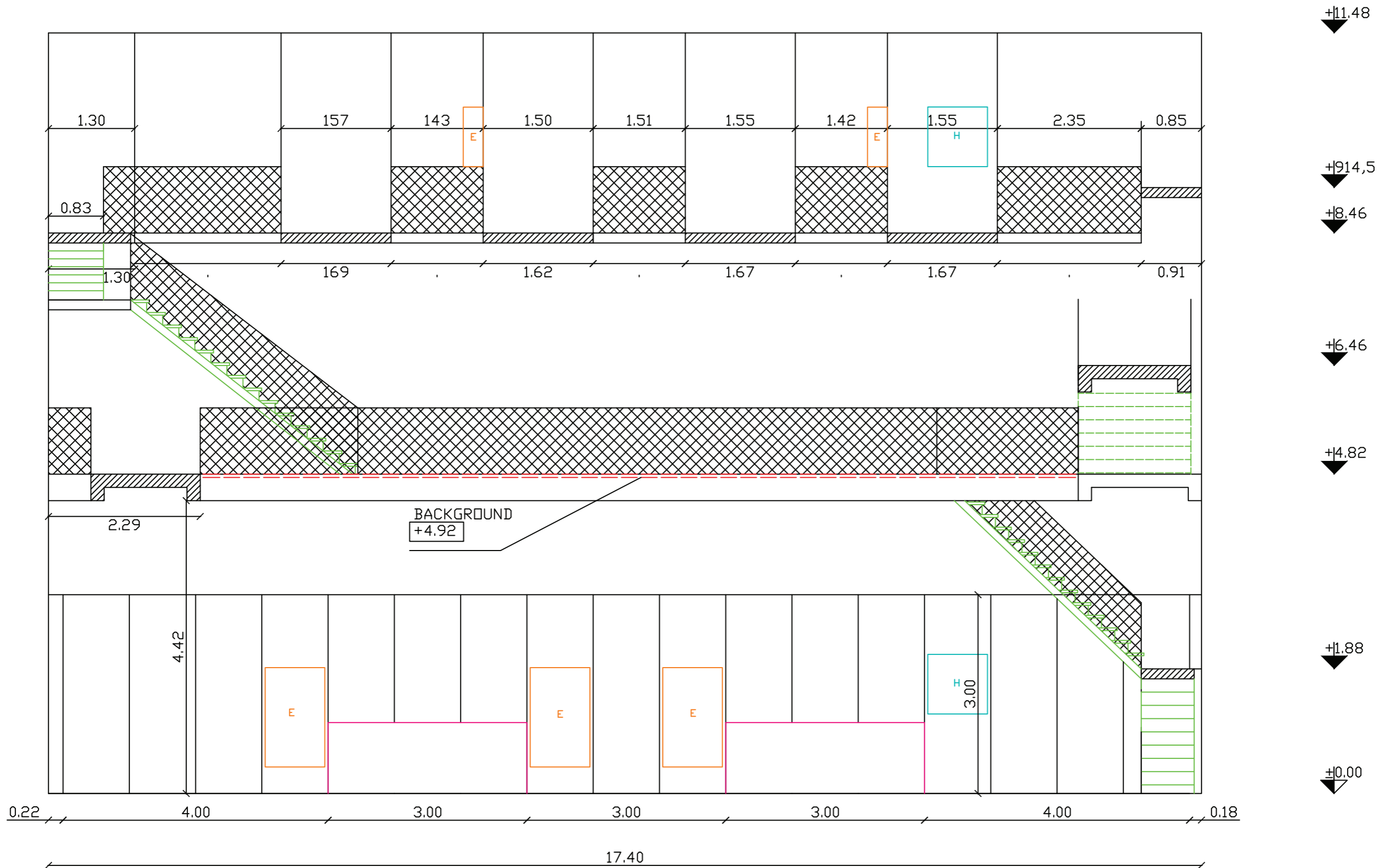


L x W x H
 23.40 m x 17.28 m x 8.46 m
 76.77 ft x 56.69 ft x 27.75 ft
 Built area = 404.3 sqm (4352.1 sqft)

Ventilation system, heating system, concrete floor, fire alarm, fire hydrants,
 power supply 300 KW (if not shoot in the same time in stages 2+3+4)
 elephant doors x 1
 ice box doors x 2
 chains/tackle beams/ trolleys - YES
 catwalks - YES

STAGE 2

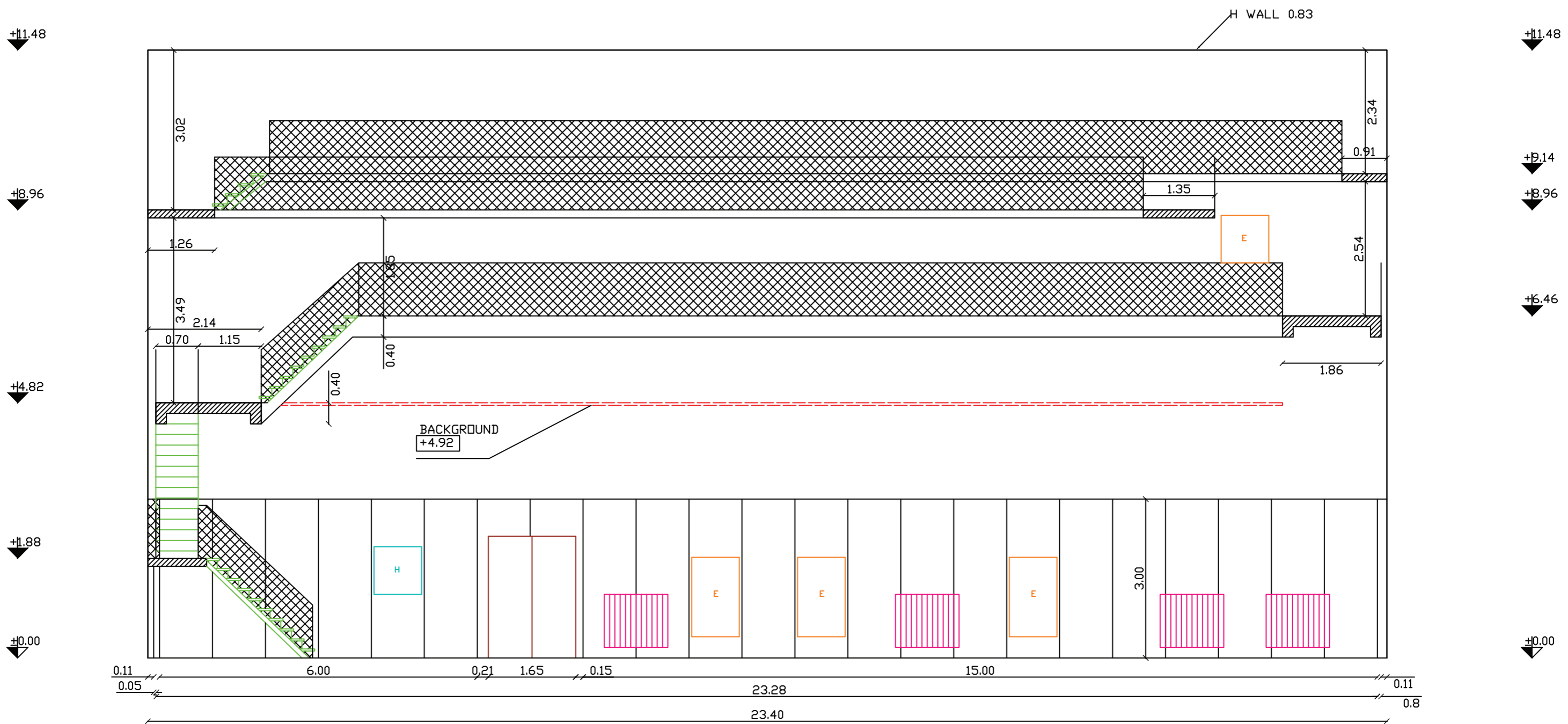


STAGE 2 CROSS SECTION

LENGHT = 23.40
 WIDTH = 17.28
 HEIGHT = 11.48
 HEIGHT OPERABLE = 8.46
 TOTAL AREA = 404.352 SQM
 OPERABLE AREA = 280.00 SQM



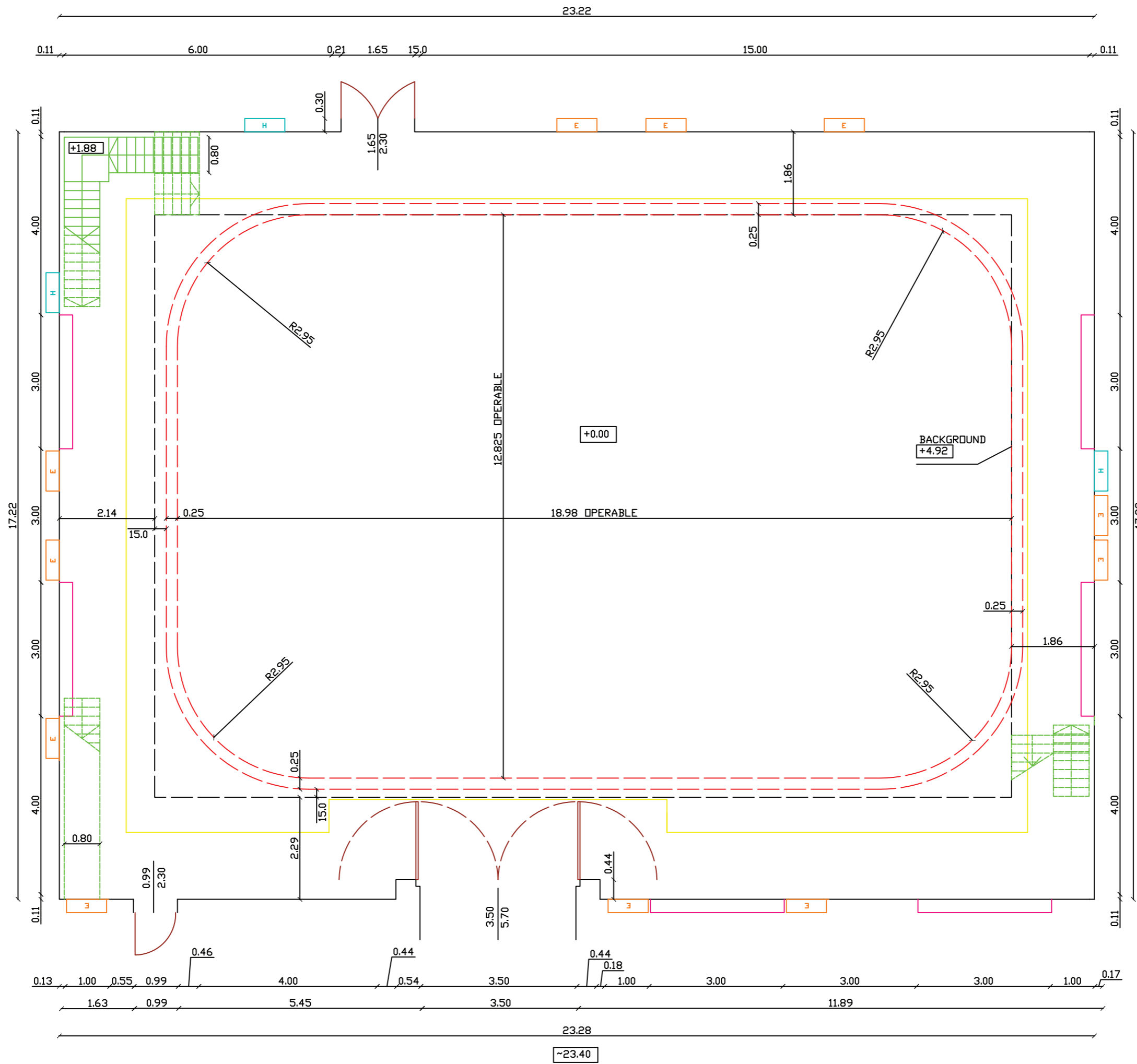
STAGE 2 CROSS



STAGE 2 LONGITUDINAL SECTION

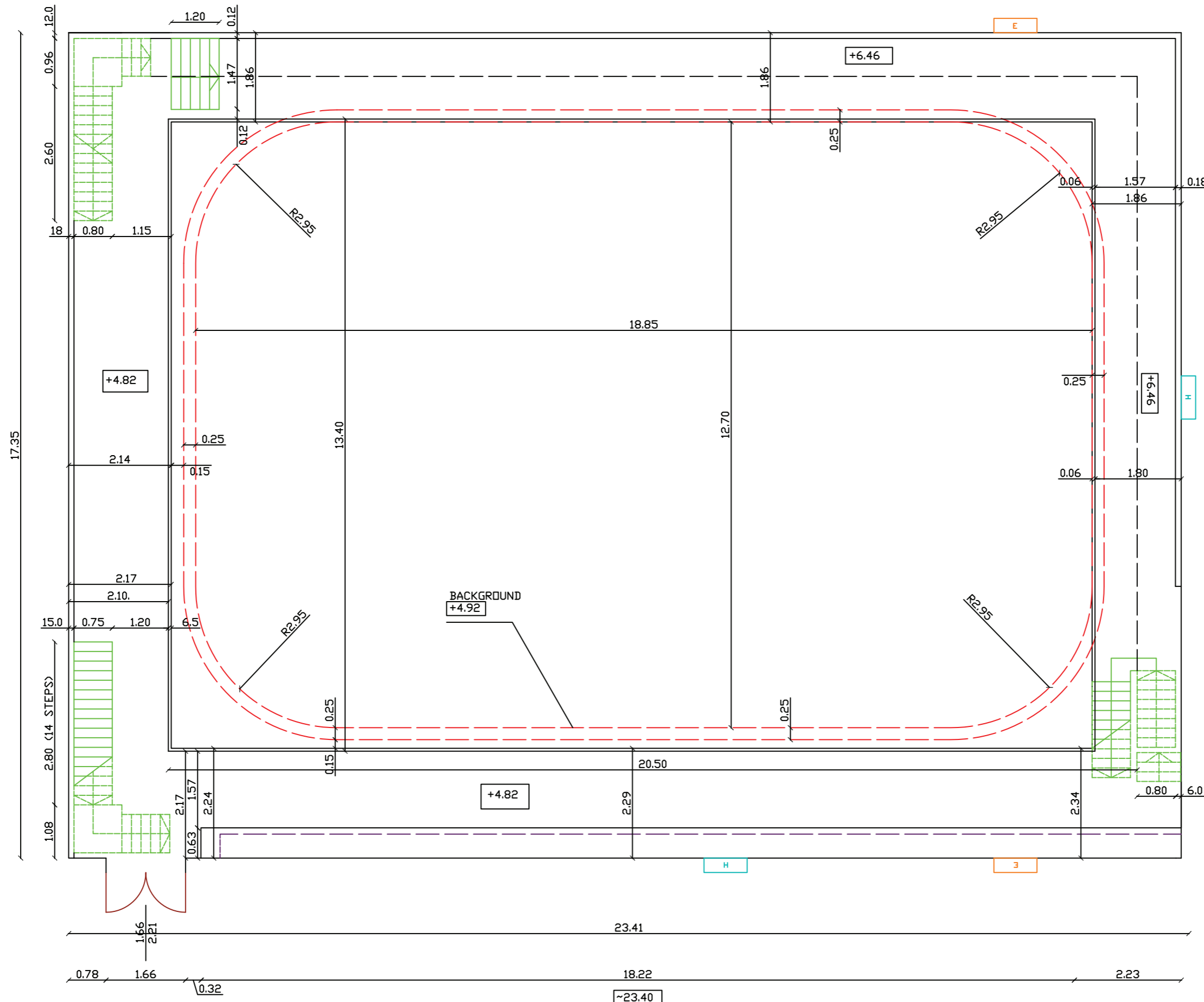
LENGTH = 23.40
 WIDTH = 17.28
 HEIGHT = 11.48
 HEIGHT OPERABLE = 8.46
 TOTAL AREA = 404.352 SQM
 OPERABLE AREA = 280.00 SQM





STAGE 2 PLAN SECTION + 0.00

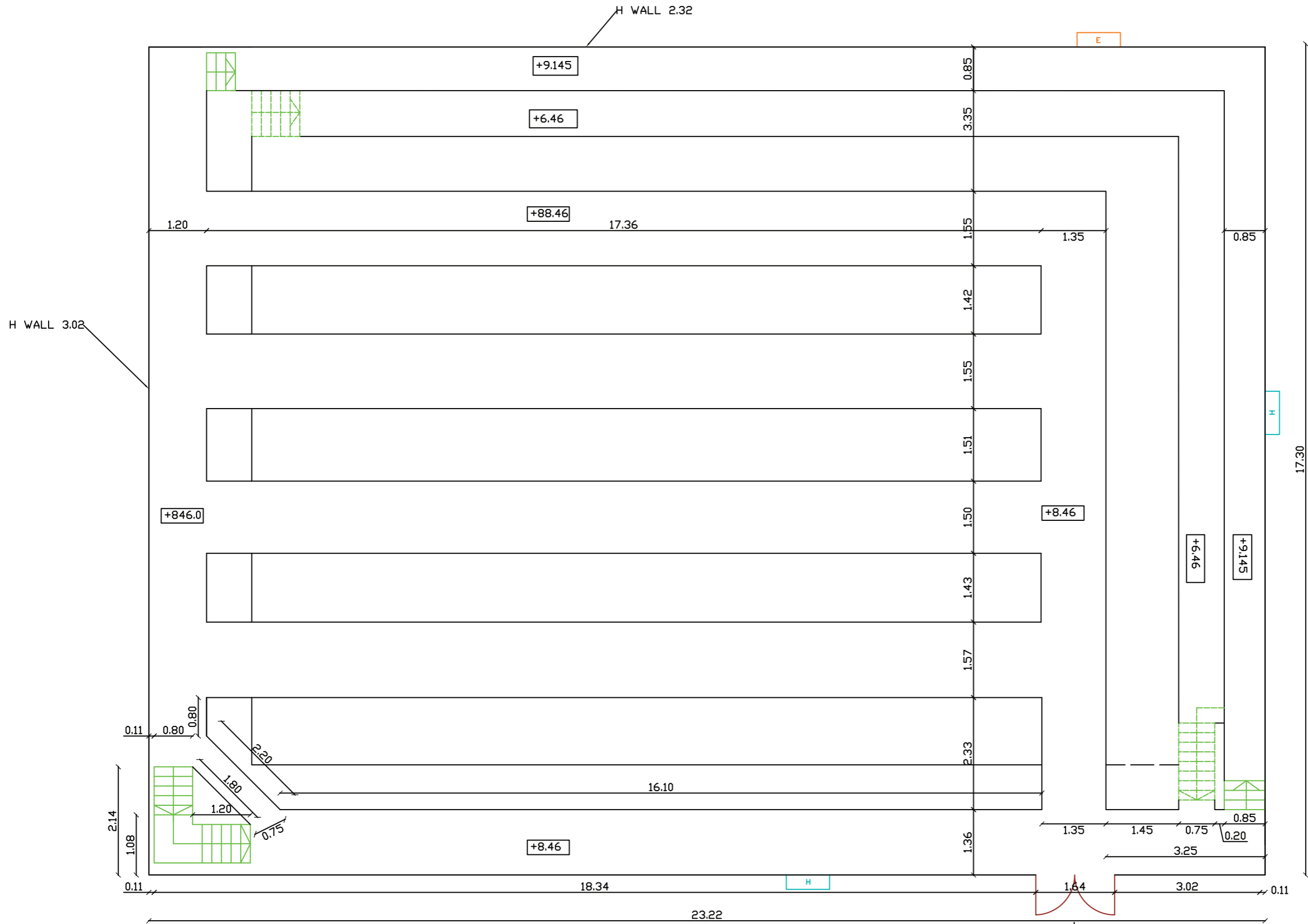
LENGHT = 23.40
 WIDTH = 17.28
 HEIGHT = 11.48
 HEIGHT OPERABLE = 8.46
 TOTAL AREA = 404.352 SQM
 OPERABLE AREA = 280.00 SQM



STAGE 2 PLAN SECTION +4.82 / +6.46
 LENGTH = 23.40
 WIDTH = 17.28
 HEIGHT = 11.48
 HEIGHT OPERABLE = 8.46
 TOTAL AREA = 404.352 SQM
 OPERABLE AREA = 280.00 SQM



STAGE 2 PLAN



STAGE 2 PLAN SECTION +8.46 / +9.14

LENGHT = 23.40
 WIDTH = 17.28
 HEIGHT = 11.48
 HEIGHT OPERABLE = 8.46
 TOTAL AREA = 404,352 SQM
 PERABLE AREA = 280.00 SQM



STAGE 2 PLAN