

L x W x H
 71.83 m x 19.83 m x 8.42 m
 235.66 ft x 65.05 ft x 27.62 ft
 Built area = 1424.38 sqm (15331.89 sqft)

Ventilation system, heating system, air conditioning, concrete floor, fire alarm,
 fire hydrants, soundproof, power supply 400 KW
 large stage doors x 2
 ice box doors x 2
 chains/tackle beams/ trolleys - YES
 catwalks - YES

STAGE 10

BACKGROUND
 +4.92

+4.82

4.82

17.35

2.80 (14 STEPS)

1.08

15.0

18

2.60

0.9

2.14

2.10

2.17

0.15

1.15

0.80

0.63

2.2

2.2

0.25

0.12

0.63

2.2

2.2

0.25

1.47

1.86

13.40

1.86

18.85

0.50

+4.92

BACKGROUND

2.10

2.17

0.15

1.15

0.80

1.86

0.9

0.63

2.2

2.2

0.25

0.12

1.47

1.86

12.70

18.85

0.50

+4.92

BACKGROUND

2.10

2.17

0.15

1.15

0.80

1.86

0.9

12.70

18.85

0.50

+4.92

BACKGROUND

2.10

2.17

0.15

1.15

0.80

1.86

0.9

0.25

0.25

0.25

0.25

0.25

0.25

0.25

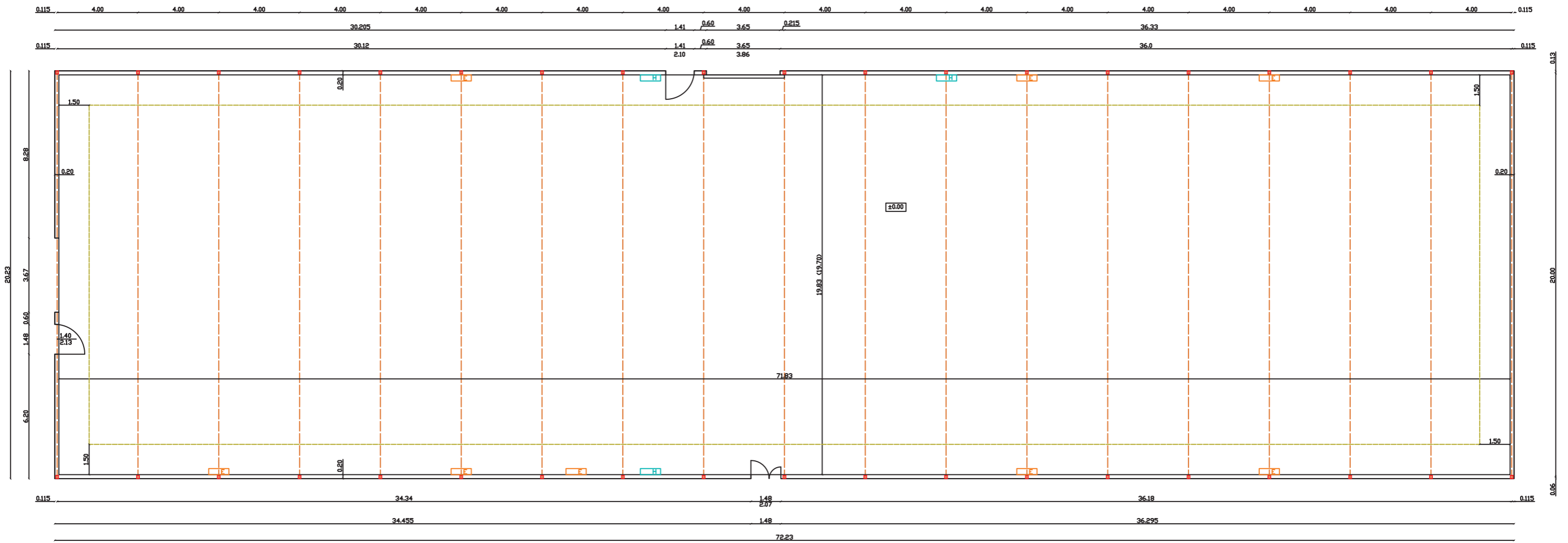
0.06

2.34

R2.95

R2.95

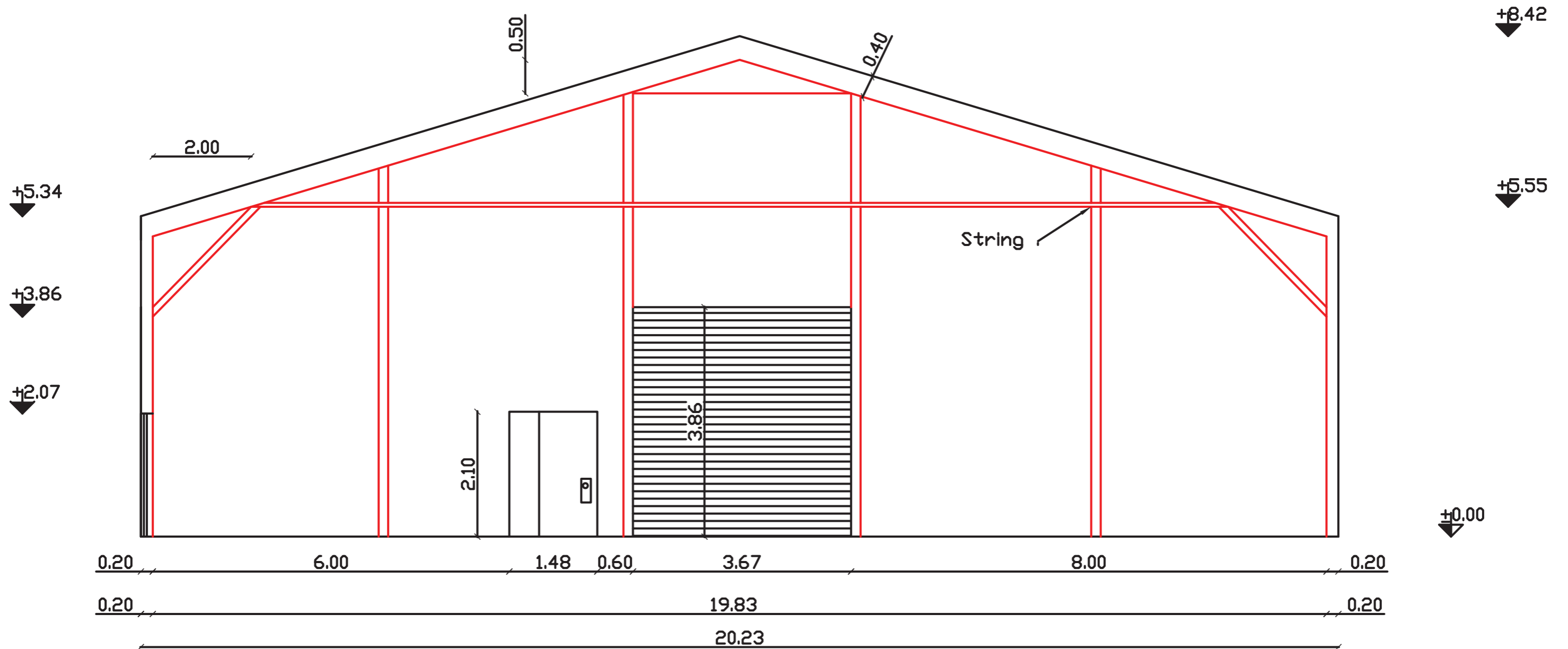
R2.95



STAGE 10 CROSS SECTION
 LENGTH= 71.83 M
 WIDTH = 19.83 M
 HEIGHT = 8.42 M HEIGHT FOR SET CONSTRUCTION 4.00 M
 AREA = 72.23X20.23=1424.69 SQM
 OPERABLE AREA = 71.83X19.83=1424.3889 SQM



STAGE 10 PLAN

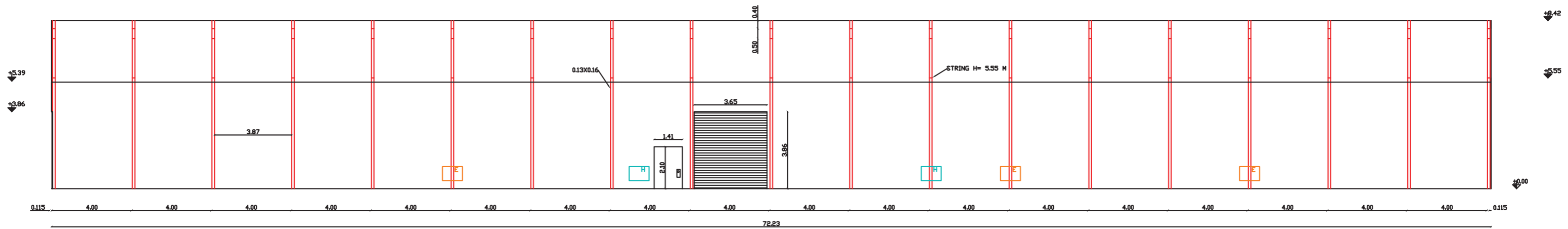


STAGE 10 CROSS SECTION

LENGHT= 71.83 M
 WIDTH = 19.83 M
 HEIGHT = 8.42 M HEIGHT FOR SET CONSTRUCTION 4.00 M
 AREA = 72.23X20.23=1424.69 SQM
 OPERABLE AREA = 71.83X19.83=1424.3889 SQM



STAGE 10 CROSS



STAGE 10 CROSS SECTION
 LENGTH= 71.83 M
 WIDTH = 19.83 M
 HEIGHT = 8.42 M HEIGHT FOR SET CONSTRUCTION 4.00 M
 AREA = 72.23X20.23=1424.69 SQM
 OPERABLE AREA = 71.83X19.83=1424.3889 SQM



STAGE 10 LONGITUDINAL