

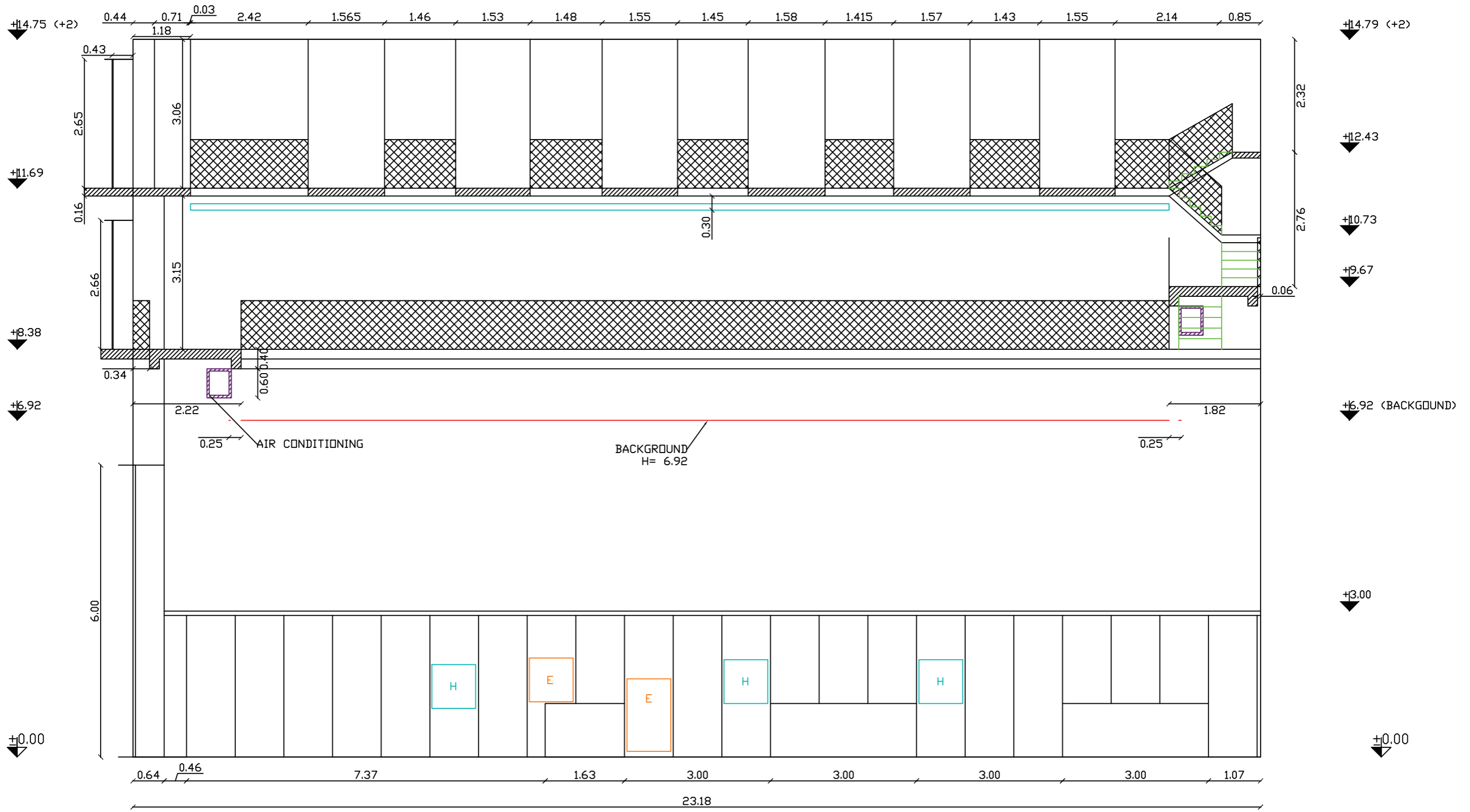
L x W x H  
35.25 m x 23.17 m x 11.69 m  
105,80 ft x 76,01 ft x 38.35 ft  
Total area = 747.23 sqm (8 043.11 sqft)

BACKGROUND  
H= 6.92

- Ventilation system, heating system, concrete floor, fire alarm, fire hydrants
- power supply 300 KW (if no shoot at the same time in stages 2+3+4)
- elephant doors x 1
- ice box doors x 2
- chains/tackle beams/trolleys - YES
- catwalks - YES

# STAGE 1

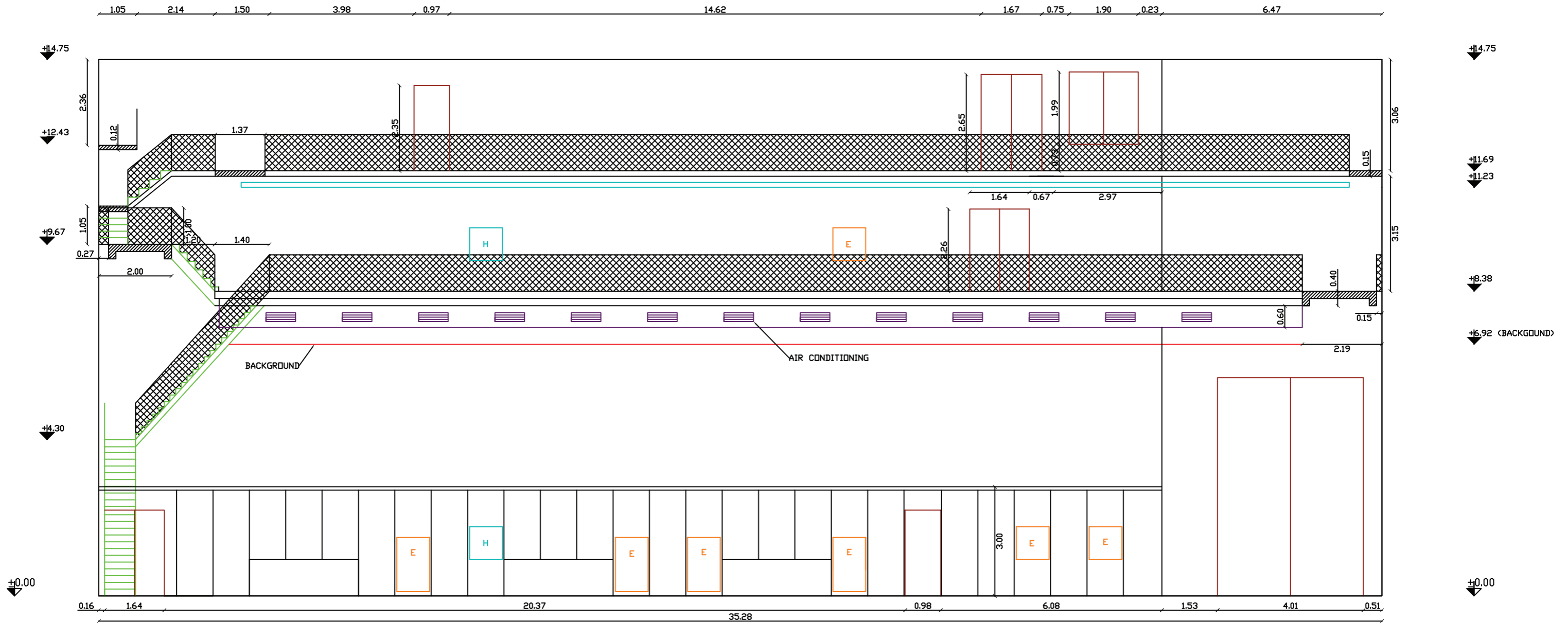
0.64 0.46 7.37 1.63 3.00 3.00 3.00 3.00



STAGE 1 CROSS SECTION  
 LENGHT = 35.25 M  
 WIDTH = 23.17 M  
 HEIGHT = 14.79 M  
 HEIGHT OPERABLE = 11.23 M  
 TOTAL AREA = 816.75 SQM

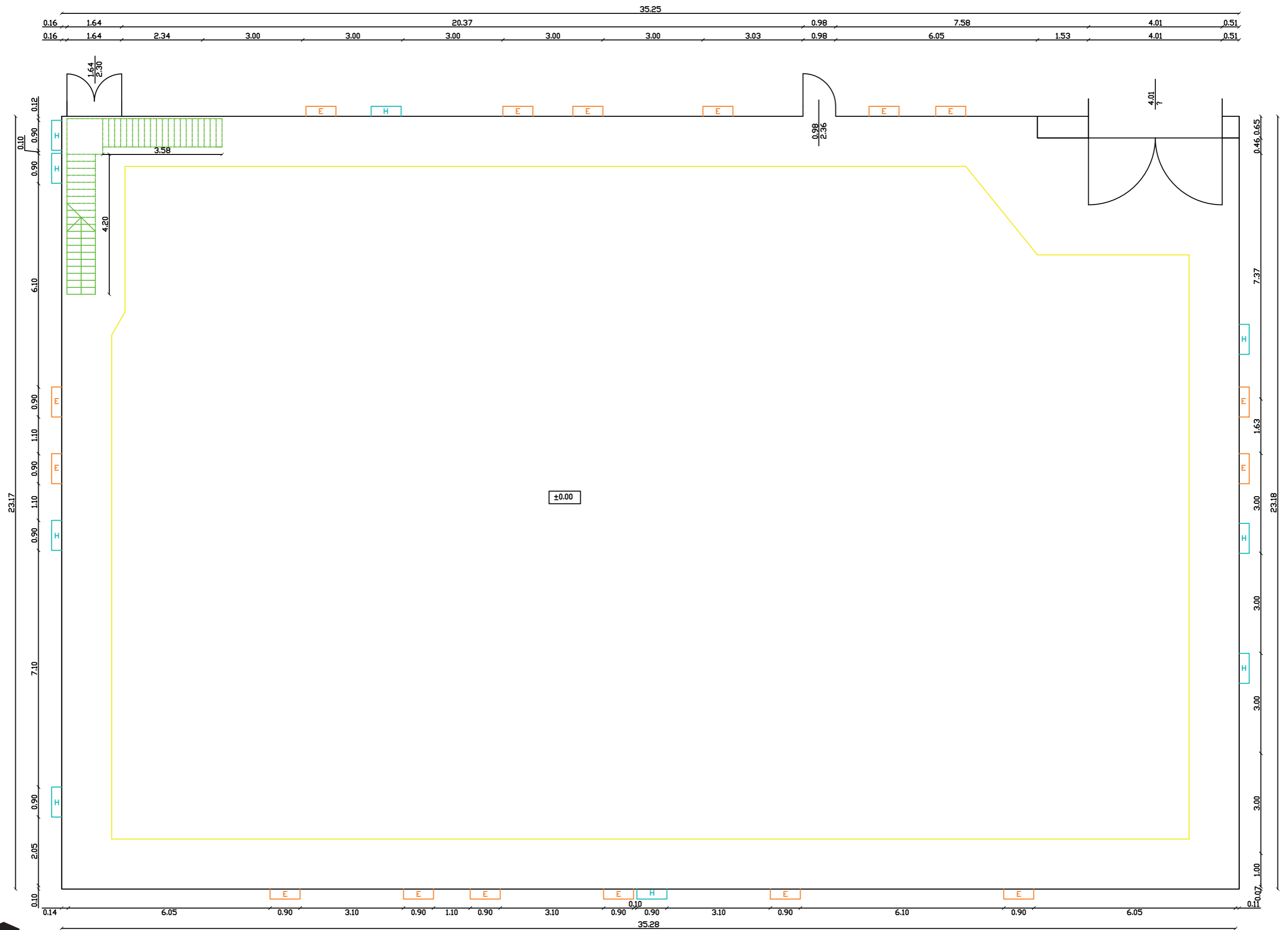


STAGE 1 CROSS



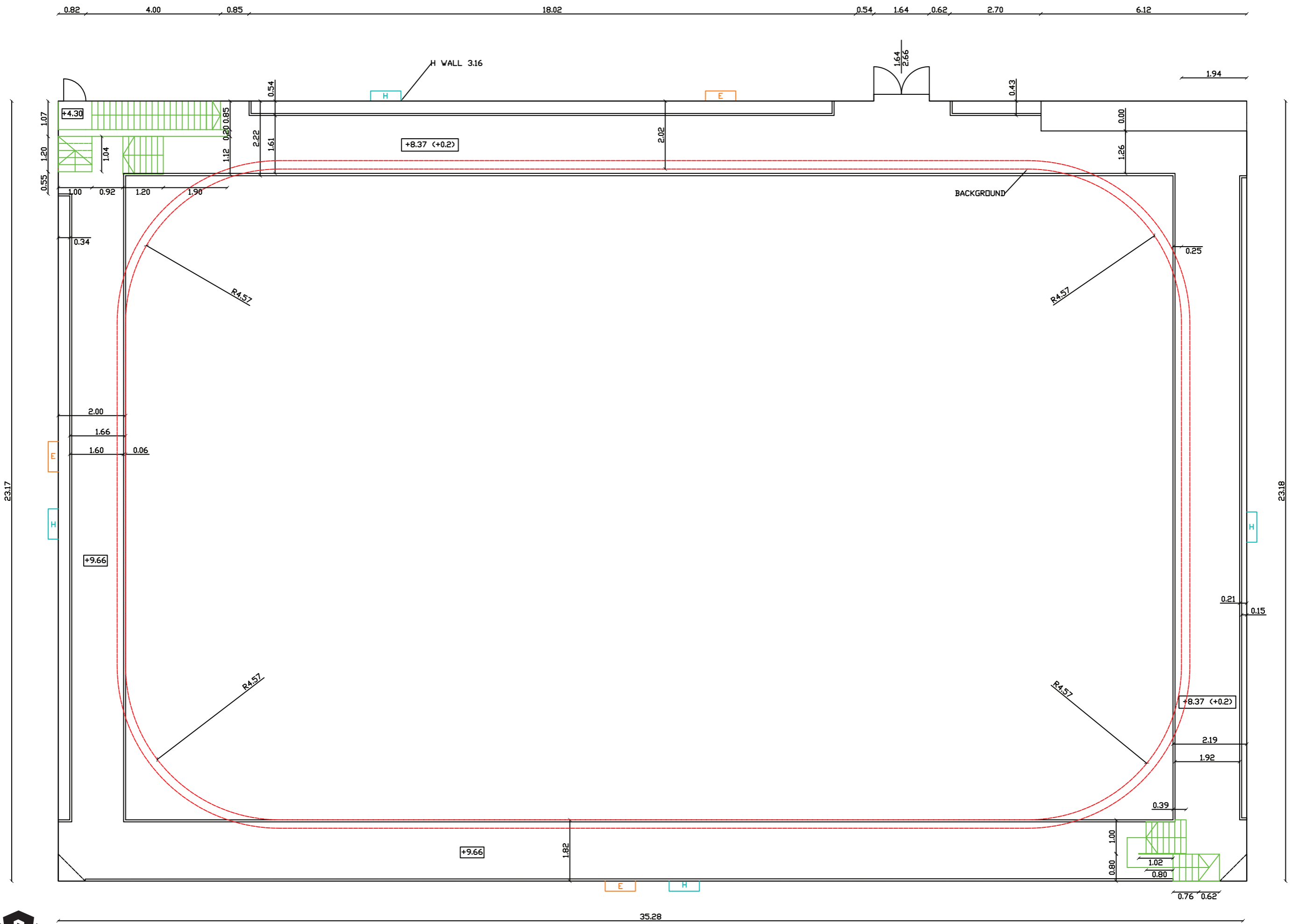
STAGE 1 LONGITUDINAL SECTION

LENGH = 35.25 M  
 WIDTH = 23.17 M  
 HEIGHT = 14.79 M  
 HEIGHT OPERABLE = 11.23 M  
 TOTAL AREA = 816.75 SQM



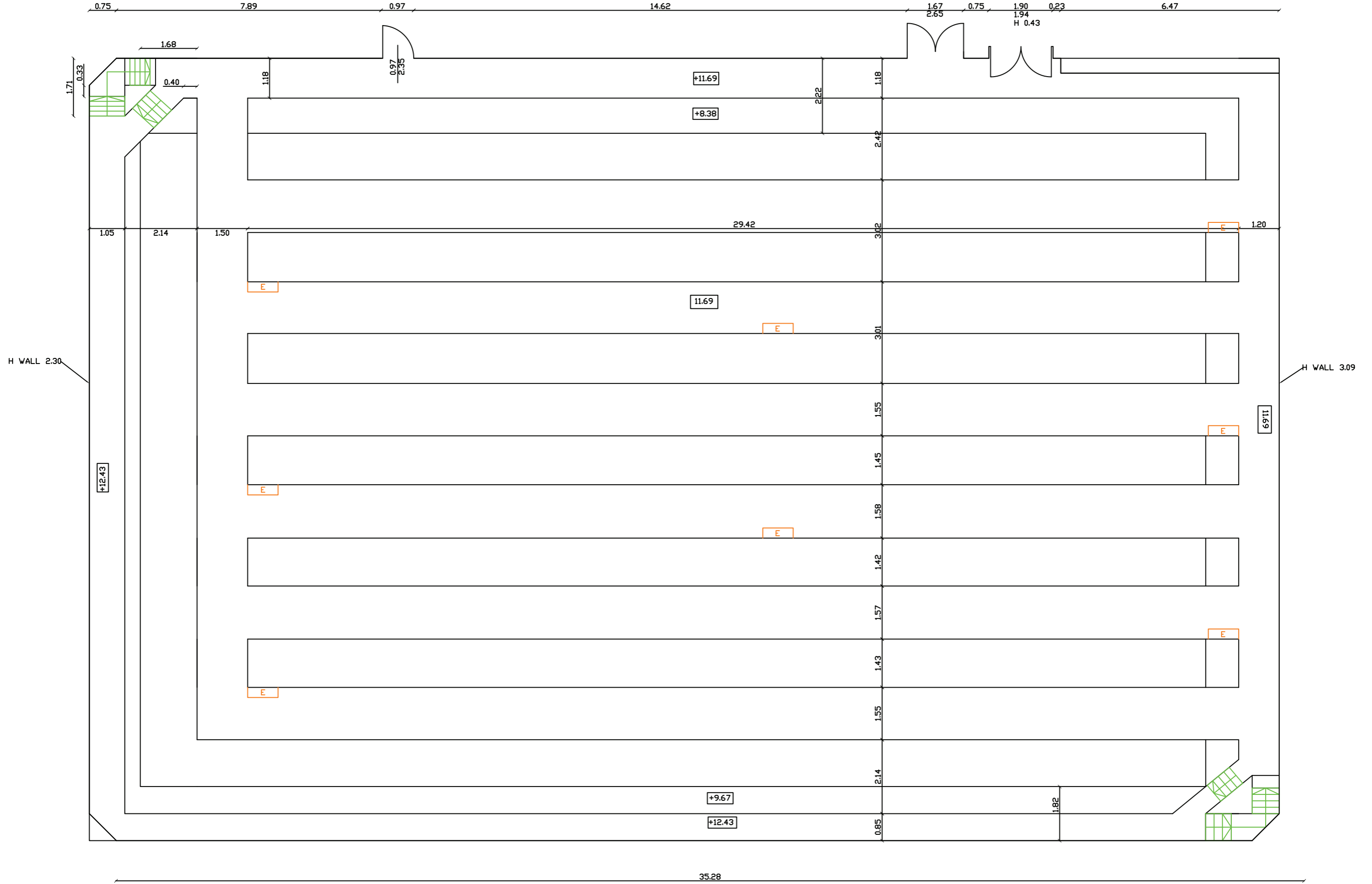
# STAGE 1 PLAN

STAGE 1 PLAN SECTION +/- 0.00  
 LENGHT = 35.25 M  
 WIDTH = 23.17 M  
 HEIGHT = 14.79 M  
 HEIGHT OPERABLE = 11.23 M  
 TOTAL AREA = 816.75 SQM



**STAGE 1 PLAN**

STAGE 1 PLAN SECTION +8.37 / +9.66  
 LENGTH = 35.25 M  
 WIDTH = 23.17 M  
 HEIGHT = 14.79 M  
 HEIGHT OPERABLE = 11.23 M  
 TOTAL AREA = 816.75 SQM



# STAGE 1 PLAN

STAGE 1 PLAN SECTION +9.67 / +12.43  
 LENGHT = 35.25 M  
 WIDTH = 23.17 M  
 HEIGHT = 14.79 M  
 HEIGHT OPERABLE = 11.23 M  
 TOTAL AREA = 816.75 SQM